

**Lysophosphatidic acid acyltransferase 3 tunes the membrane status of germ cells by
incorporating docosahexaenoic acid during spermatogenesis**

**Yoshiko Iizuka-Hishikawa¹, Daisuke Hishikawa^{1,*}, Junko Sasaki², Keiyo Takubo^{3,11},
Motohito Goto^{4,§}, Katsuyuki Nagata¹, Hiroki Nakanishi⁵, Hideo Shindou^{1,9,11}, Tadashi
Okamura^{4,6}, Chizuru Ito⁷, Kiyotaka Toshimori^{7,8}, Takehiko Sasaki^{2,5,11}, Takao Shimizu^{1,10,*}**

¹Department of Lipid Signaling, National Center for Global Health and Medicine, Shinjuku-ku,
Tokyo 162-8655, Japan

²Department of Medical Biology, Akita University Graduate School of
Medicine, Akita 010-8543, Japan

³Department of Stem Cell Biology

⁴Department of Laboratory Animal Medicine

National Center for Global Health and Medicine, Shinjuku-ku, Tokyo 162-8655, Japan

⁵Research Center for Biosignal, Akita University, Akita 010-8543, Japan

⁶Section of Animal Models, Department of Infectious Diseases, National Center for Global
Health and Medicine, Shinjuku-ku, Tokyo 162-8655, Japan

⁷Department of Reproductive Biology and Medicine, Graduate School of Medicine, Chiba
University

⁸Future Medicine Research Center (FMRC) Chiba University, Chiba 260-8670, Japan
Department of ⁹Lipid Science and ¹⁰Lipidomics, Graduate School of Medicine, The University
of Tokyo, Bunkyo-ku, Tokyo 113-0033, Japan

¹¹Agency for Medical Research and Development (AMED)-Core Research for Evolution Science
and Technology (CREST), Chiyoda-ku, Tokyo 100-0004, Japan

[§]Present Address: Animal Resource Development Laboratory, Animal Resources and Technical
Research Center, Central Institute for Experimental Animals, Kawasaki-ku, Kanagawa,
210-0821, Japan

Running title: *LPAAT3 produces DHA-enriched membrane for spermatogenesis*

*To whom correspondence should be addressed: Takao Shimizu and Daisuke Hishikawa,
National Center for Global Health and Medicine, Tokyo 162-8655, Japan. phone:
+81-3-5273-6844, Fax: +81-3-5273-4526, e-mail: Takao Shimizu tshimizu@ri.ncgm.go.jp,

Daisuke Hishikawa dhishikawa@ri.ncgm.go.jp

Keywords: glycerophospholipid, phospholipid metabolism, membrane enzyme, spermatogenesis, polyunsaturated fatty acid (PUFA)

ABSTRACT

Docosahexaenoic acid (DHA) is one of the essential ω -3 polyunsaturated fatty acids with a wide range of physiological roles important for human health. For example, DHA renders cell membranes more flexible and is therefore important for cellular function, but information on the mechanisms that control DHA levels in membranes is limited. Specifically, it is unclear which factors determine DHA incorporation into cell membranes and how DHA exerts biological effects. We found that lysophosphatidic acid acyltransferase 3 (LPAAT3) is required for producing DHA-containing phospholipids in various tissues, such as the testes and retina. In this study, we report that LPAAT3 KO mice display severe male infertility with abnormal sperm morphology. During germ cell differentiation, the expression of LPAAT3 was induced and germ cells obtained more DHA-containing phospholipids. Loss of LPAAT3 caused drastic reduction of DHA-containing phospholipids in spermatids that led excess cytoplasm around its head, which is normally removed by surrounding

Sertoli cells via endocytosis at the final stage of spermatogenesis. *In vitro* liposome filtration assay raised a possibility that DHA in phospholipids promotes membrane deformation that is required for the rapid endocytosis. These data suggest that decreased membrane flexibility in LPAAT3 KO sperm impaired the efficient removal of sperm content through endocytosis. We conclude that LPAAT3-mediated enrichment of cell membranes with DHA-containing phospholipids endows these membranes with physicochemical properties needed for normal cellular processes, as exemplified by spermatogenesis.

In the body, fatty acids are mainly stored in membrane phospholipids and neutral lipids, and act as the structural components of the cell membrane, an energy source, and precursors of bioactive lipid mediators (1). Since the physical and chemical properties of fatty acids differ depending on the carbon chain length and degree of unsaturation, the fatty acid composition of phospholipids affects membrane fluidity, flexibility, fusion, fission,

and curvature (2,3). Polyunsaturated fatty acids (PUFAs) render the membrane flexible, while saturated or *trans*-fatty acids rigidify it (2,4,5). Although the fatty acid composition of membrane phospholipids varies among tissues and they are thought to be important for the cellular functions, little is known about the influence of physical properties of membranes *in vivo* (6).

Docosahexaenoic acid (DHA, 22:6) is one of the omega-3 (ω -3) PUFAs with 22 carbon chains and 6 double bonds. Since mammals cannot synthesize ω -3 fatty acids (7), we need to obtain them from marine dietary sources (8). The nutritional importance of ω -3 PUFAs was first proposed in 1932 (9) and attracted more attention by studies in late 1970s, which showed a correlation between low incidence of myocardial infarction and high dietary intake of ω -3 PUFAs (10,11). Identification of ω -3 fatty acid-derived pro-resolving mediators (protectins, resolvins, and maresins) (12) also expands our understanding of the roles of ω -3 PUFAs besides being energy sources and membrane phospholipid components. To date, numerous studies have reported the beneficial effects of ω -3 PUFAs on health, and DHA deficiency is associated with hyperlipidemia, cardiovascular disease, cognitive dysfunction, and retinal degeneration (8). In addition, ω -3 PUFAs (especially DHA) appear important for sperm formation and male fertility in

mammals, while increased intake of saturated or *trans*-fatty acids are reported to correlate with a decrease in male reproductive ability in humans in recent years and to be a risk factor for male infertility (13-18). Together with the fact that mammalian sperm possesses the high amount of PUFA including DHA (19), it is possible that highly fluid and flexible membrane is required for the sperm formation and functions. Recent gene knockout strategies as well as analyses of human genetic disorders have unveiled several important molecules involved in the uptake and trafficking of DHA (20-22), however, the mechanism how lipid profiles affect the male reproductive system is not well understood.

Here, we found that lysophosphatidic acid acyltransferase 3 (LPAAT3), also known as 1-acylglycerol-3-phosphate *O*-acyltransferase 3 (AGPAT3), is the critical enzyme for producing DHA-containing membrane phospholipids in various tissues, such as the testes and retinas (also refer to an accompanying paper by Shindou et al). LPAAT3 knockout (KO) mice showed severe male infertility due to the defect in the final step of spermatogenesis as a consequence of a specific and dramatic decrease in DHA-containing phospholipids. Thus, this study represents the insight into how DHA is required in the body, and provides a new

mammalian context to study the DHA-related health and diseases.

RESULTS

LPAAT3 is expressed in mature spermatids and Leydig cells in the testes - We previously reported that LPAAT3 is an enzyme producing PUFA-containing phosphatidic acid (PA). LPAAT3 is expressed predominantly high in the testes and it is induced during sexual maturation (23,24). To determine which cells of the testes express LPAAT3, immunohistochemical analyses were performed. LPAAT3 was expressed mainly in spermatids and Leydig cells (Fig. 1A; Supplemental Fig. S1). In spermatids, LPAAT3 expression was detected in step 11 spermatids, and the levels increased during differentiation (S11 to S16 in Supplemental Fig. S1). *LPAAT3* mRNA expression in germ cells was also investigated. Spermatogonia, spermatocytes, round spermatids, and elongated spermatids were isolated from mouse testes (Supplemental Fig. S2A-C). Recent study demonstrated that the induction of *LPAAT3* mRNA expression in an *in vitro* model of differentiation from spermatogonial stem cells to spermatocyte (25). Consistent with this *in vitro* model, the level of *LPAAT3* mRNA was strongly induced from spermatogonia to spermatocyte. Additionally, we found that *LPAAT3* mRNA expression

was further induced from spermatocyte to round spermatids (Fig. 1B). These results suggest that LPAAT3 might play a role in sperm differentiation and/or functions.

LPAAT3 is required for the production of DHA-containing phospholipids in the testes - To study the role of LPAAT3 *in vivo*, we generated global LPAAT3 knockout (KO) mice (Supplemental Fig. S3A-C). Previous *in vitro* studies demonstrated that LPAAT3 is an enzyme that produces PA containing PUFA, such as arachidonic acid (20:4) and DHA (23,24,26,32). Thus, we first examined the impact of LPAAT3 depletion on the LPAAT activities in wild-type (WT) and KO testes. Consistent with its substrate preference *in vitro*, the LPAAT activities on 20:4-CoA (arachidonoyl-CoA) and 22:6-CoA (DHA-CoA) in the testes were significantly decreased in LPAAT3 KO mice (Fig. 2A). The dramatic decrease of the enzyme activity towards DHA-CoA was seen (Fig. 2A). Thus, LPAAT3 appears the enzyme mediating primarily the incorporation of DHA into LPA *in vivo*.

We then examined how the decreased activity of DHA incorporation into LPA brings change to the composition of membrane phospholipids. In agreement with the observed LPAAT activities, PA-38:6 and 1-*O*-alkyl-2-acyl PA-38:6 (oPA-38:6), which are presumed to contain DHA, were decreased in LPAAT3 KO testes

(Supplemental Fig. S4A). Since PA is a common intermediate for phospholipids, we examined the effect of LPAAT3 deficiency on the fatty acid composition of three major membrane phospholipids in the testes: phosphatidylcholine (PC), phosphatidylethanolamine (PE), and phosphatidylserine (PS). Similar to the results obtained for PA, phospholipids presumably containing DHA were decreased in LPAAT3 KO testes (Fig. 2B; Supplemental Fig. S4B, C). To confirm whether DHA-containing PCs were really decreased, the individual species of PC-38:6 (PC-18:2/20:4 and PC-16:0/22:6) and PC-40:6 (PC-16:0/24:6, PC-18:1/22:5, and PC-18:0/22:6) were analyzed. It is clear that DHA-containing species were selectively decreased in LPAAT3 KO mice (Fig. 2C, D). Considering that LPAAT3 expression is increased during spermatogenesis (Fig. 1A, B), alterations of phospholipid compositions in this step in LPAAT3 KO mice and heterozygote (HZ) mice were also compared. Highly unsaturated fatty acids, such as DHA- and docosapentaenoic acid (DPA, 22:5)-containing PC and PE species were increased during spermatogenesis, and displayed the most enrichment in haploid cells (RS, ES1 and ES2 in Supplemental Fig. S5A, B). However, the increase in DHA-containing species was strongly suppressed in LPAAT3 KO germ cells (Fig. 2E, F). These results indicate that LPAAT3 is

required to enrich DHA-containing membrane phospholipids during spermatogenesis.

Lack of LPAAT3 leads to male infertility - We next investigated the roles of LPAAT3 *in vivo*. Notably, we could not obtain any pups from male LPAAT3 KO mice by natural mating, suggesting that LPAAT3 KO male mice were infertile. To assess the cause of male infertility, the testis weight, the number of sperm, and the level of male reproductive hormones, such as testosterone, luteinizing hormone (LH), and follicle-stimulating hormone (FSH), were analyzed. The number of sperm from LPAAT3 KO caudal epididymis was half of those from WT and HZ epididymis, while other factors were comparable to control mice (Fig. 3A-E). The apoptotic cells were not increased in LPAAT3 KO testes, suggesting that apoptosis of germ cells is not the cause of decreased number of sperm (Fig. 3F, G). We further evaluated fertility of LPAAT3 KO sperm by *in vitro* fertilization (IVF) and sperm-oocyte fusion assays. LPAAT3 WT and HZ sperm fertilized more than 90% of WT eggs at 24 hours after insemination, whereas sperm from LPAAT3 KO mice fertilized no eggs (Fig. 3H). In sperm-oocyte fusion assays, the rate of LPAAT3 KO sperm fusing with WT eggs lacking the zona pellucida were extremely low (<10%) (Fig. 3I). Cumulatively, these results indicate that

the cause of male infertility in LPAAT3 KO mice was incompetence of sperm rather than the decreased number of sperm.

LPAAT3 KO sperm display morphological abnormalities - To determine the cause of sperm dysfunctions, we analyzed sperm morphology and testis histology in detail. Remarkably, as many as 90% of the KO sperm displayed heads that bent backwards (Fig. 4A, B). As there is no significant difference in ploidy, fraction frequency of germ cells, or the expression of representative differentiation markers between HZ and KO mice, LPAAT3 KO germ cells appeared to differentiate normally into haploid cells (Fig. 4C-E).

Analyses using scanning electron microscopy (SEM) revealed that unlike WT sperm, membranous structures wrapped around LPAAT3 KO sperm head (Fig. 5A). The substances around LPAAT3 KO sperm head appear to be plasma membrane of Sertoli cells because nectin-2, a cell adhesion molecule expressed only in the Sertoli cells, was detected in epididymal sperm of LPAAT3 KO but not HZ or WT mice (Fig. 5B). This suggests sperm-Sertoli cell junctions were not successfully removed when the sperm are released into seminiferous tubules. Coexistence of step 9 and step 16 spermatids (refer to Fig. S1) in the same stage of seminiferous tubules in LPAAT3 KO testis, which do not coexist

normally (Fig. 5C), also indicated the detachment of sperm-Sertoli cell junctions were perturbed in LPAAT3 KO mice. Taken together, these results suggest that LPAAT3 KO mice failed to release mature sperm competent for normal fertilization.

DHA-containing flexible membrane is required for sperm maturation -

We finally approached the mechanisms of the delayed sperm release (spermiation) in LPAAT3 KO testes. Prior to sperm release, the sperm-Sertoli cell junction is removed by the coordinated action of two different machineries (27). One is the cleavage of cell adhesion molecules at apical ectoplasmic specialization (aES) by proteases (28) and the other is the endocytosis-mediated lysosomal degradation through tubulobulbar complexes (TBC) (29) (Fig. 6A). Disruption of those machineries is known to lead the delay of spermiation (30). The aES is the testis-specific adherence junction anchoring the elongated sperm until release. Just before spermiation, aES is removed by several proteases, such as matrix metalloproteinases (MMPs) (30). However, the expression of MMP-2 and membrane type-1 MMP (MT1-MMP) were not altered in LPAAT3 KO testes (Fig. 6B, C). Also, we could not find the aES around released LPAAT3 KO sperm (Fig. 6D), suggesting the aES is normally removed in LPAAT3 KO sperm. Thus, we next focused on the TBC. The TBC

is composed of narrow actin-lined tubules (~50 nm in diameter), bulbous portions, and clathrin-coated pits (Fig. 6A). At the terminal end of the tubule, there are numerous double-membrane vesicles produced by clathrin-mediated endocytosis. These vesicles are subjected to lysosomal degradation of sperm components and spermatid-Sertoli cell junctions. Therefore, if the degradation of sperm-Sertoli cell junctions by TBC is disrupted in LPAAT3 KO mice, elimination of sperm cytoplasm should also be disturbed. Accordingly, we determined whether or not the elimination of cytoplasm was impaired in LPAAT3 KO sperm. Transmitted electron microscopy (TEM) analyses suggested that the excess cytoplasm was retained around the head of released LPAAT3 KO sperm (magenta arrows in Fig. 6D). Consistent with the observation, ubiquitin, a marker of cytoplasm, was more enriched in the LPAAT3 KO sperm heads compared to WT sperm (Fig. 6E). These results strongly suggest that the function of TBC is impaired in LPAAT3 KO mice.

We examined the potential relationship between dysfunction of TBC and changes in phospholipid composition, especially decrease in DHA-containing phospholipids in LPAAT3 KO mice. DHA-enriched membrane is recently reported to promote the endocytosis by facilitating the membrane deformation and fission (31). This

in vitro study prompted us to hypothesize that rapid double-membrane-based endocytosis at the TBC requires the DHA-enriched flexible membrane. Since Pinot et al. compared the liposome deformation and fission between oleic acid (18:1)- and DHA-containing phospholipids, we further examined whether or not the degree of unsaturation of the fatty acid in phospholipids affect them using liposome filtration assay (Supplemental Fig. S6). We employed the filtration assay system, as no method is currently available for functional assays of TBC. We compared the ease of passage (filter passage index) of liposomes composed of different kinds of PCs (PC-16:0/18:1, PC-16:0/20:4, and PC-16:0/22:6). As a result, the filter passage index of DHA-containing PC liposomes (PC-16:0/22:6) was significantly and tended to be higher than those of PC-16:0/18:1 and PC-16:0/20:4 liposomes, respectively (Fig. 6F, G). From these results, we propose that LPAAT3-mediated production of DHA-enriched flexible membrane is required for the normal spermiation.

DISCUSSION

It has been known that ω -3 fatty acids, including DHA, have clinical and nutritional effects different from other PUFAs (8). However, the regulatory mechanisms of DHA incorporation into the cell membrane remain unknown thus limiting our

understanding of the role of DHA *in vivo*. Here, we demonstrated that LPAAT3 is the essential enzyme to produce the DHA-containing phospholipids in the testes. This was consistent with our recent hypothesis that the amount of DHA in cell membranes is predominantly regulated by LPAATs, enzymes required for *cha* phospholipid biosynthesis (32). In LPAAT3 KO mice, DHA-containing phospholipids, but not other PUFA-containing species, in the testes were dramatically decreased, suggesting the amount of DHA in the cell membrane is specifically determined by LPAAT3 (Supplemental Fig. S5).

Drastic and specific decrease of DHA-containing phospholipids in LPAAT3 KO mice led to male infertility due to the failure in spermiogenesis. It is known that mammalian sperm membranes have a high amount of PUFA-containing phospholipids, not only DHA but also other PUFAs such as eicosapentaenoic acid and arachidonic acid (19). So far, a large proportion of PUFA in the sperm cell membrane is considered important for critical events during membrane fusion, such as acrosome formation and fusion with eggs. This is thought to be due to the highly fluid properties of PUFA-enriched membranes (33). For instance, fatty acid desaturase 2 (FADS2) KO mice fed with the AIN93G diet, which lacks all PUFAs except for linoleic acid (18:2, ω -6) and α -linolenic

acid (18:3, ω -3), failed to produce mature spermatids as a result of a defect in acrosome formation (18,34,35). However, unlike FADS2 KO mice, elongated spermatids with acrosomes were observed in LPAAT3 KO mice (Fig. 6D). This difference might derive from kinds of decreased PUFA species. Almost all highly unsaturated fatty acid species (except for mead acid, 20:3) are reduced in FADS2 KO mice, whereas only DHA-containing phospholipids are eliminated in LPAAT3 KO mice. In LPAAT3 KO mice, membrane properties required for acrosome formation are likely provided by a compensatory increase in other PUFA-containing species (Supplemental Fig S5A, B).

DHA-containing phospholipids increase the ability of cell membranes to deform and vesiculate by its flexible property, which promotes rapid endocytosis (31). Combined with this, we propose that LPAAT3 KO sperm had a defect in the elimination of excess cytoplasm in TBC, which requires the clathrin-mediated endocytosis. Since DHA is more flexible than ω -6 DPA (22:5) due to the additional double bond (36), this would explain how the increased DPA-containing species in LPAAT3 KO failed to compensate for the defects observed in sperm. Conversely, the accumulation of saturated and *trans*-fatty acids, which rigidify the membrane (4,5),

likely impede sperm production. Indeed, diets rich in saturated or *trans*-fatty acids are reported to decrease the quantity and quality of sperm (37,38). Since the Western food is abundant in these fatty acids, and contains little ω -3 fatty acids such as DHA (39), our findings suggest the possible link between metabolic disorders and the reduced male fertility that has been observed in recent decades (40). In addition to their impact on the physical properties of cell membranes, DHA-containing phospholipids might also act as a platform for the functions and trafficking of various proteins needed for proper sperm release and/or for metabolic precursors of DHA-derived lipid mediators, termed docosanoids (12).

In conclusion, by analyzing LPAAT3 KO mice, we identified the novel and specific function of DHA for spermiogenesis. In addition, while the altered DHA levels are associated with several pathological conditions including obesity, cancer, and aging (41-44), the causal relationship between DHA deficiency and diseases are largely unknown. Therefore, the LPAAT3 KO mice provide a useful and timely tool for studying the roles of DHA *in vivo*.

EXPERIMENTAL PROCEDURES

Animals - All animal experiments were approved and performed in accordance

with the guidelines of the Animal Research Committee of the National Center for Global Health and Medicine (12053, 13009, 14045, 15037, and 16062), and the animal experimentation committee (P11-045) of the University of Tokyo, in addition to the Biomedical Research Ethics Committee of the Graduate School of Medicine at Chiba University (Approval No. A28-18). All experiments of gene recombination were approved by and performed in accordance with the guidelines of the Biosafety Committee of National Center for Global Health and Medicine (27-P-044).

KO mice and genotyping - LPAAT3 KO mice were generated from C57BL/6N mouse embryonic stem cells [Agpat3^{tm1(EUCOMM)Wtsi}] purchased from the European Conditional Mouse Mutagenesis Project. In this construct, a LacZ cassette with a splice acceptor is transcribed from the endogenous promoter in the form of a fusion transcript in which exon1-3 spliced to LacZ gene (Supplemental Fig. S3A). Mice were genotyped by PCR using primers annealing to the genomic regions indicated in Supplemental Fig. S3A (WT F: accttatgaaggtgaccatgtggag, KO F: cgtcgagaagttcctattccgaagt, Common R: gtgtcctgaatgaccaggaagagaa). The expected product sizes are 381 bp for the WT allele and 244 bp for the KO allele.

Immunohistochemistry - Mouse

testes were fixed with Bouin's solution by perfusion through the left ventricle and then immersed in Bouin's solution at room temperature for 1 hour. Samples were then embedded in paraffin and sectioned at a thickness of 4 μ m. Sections were deparaffinized with xylene and autoclaved in Instant Antigen Retrieval Solution H (LSI Medience Corporation, Tokyo, Japan) at 121°C for 5 minutes. Samples were then permeabilized with 0.1% Triton X-100/PBS for 15 minutes, blocked in the blocking solution (5% normal goat serum and 3% Bovine serum albumin [BSA] [Sigma-Aldrich, St. Louis, MO] in PBS) for 30 minutes, and incubated with anti-LPAAT3 antibody (7.07 μ g/mL) (24) in blocking solution overnight at 4°C. Sections were incubated with anti-rabbit IgG antibody conjugated to Alexa 555 (1:2000) (Thermo Fisher Scientific, Waltham, MA), *Arachis hypogaea* agglutinin (PNA)-FITC (1:2000, J-Oil Mills, INC., Tokyo, Japan), and Hoechst 33258 (1:300) (Sigma-Aldrich) to stain the acrosome and nucleus.

Preparation of testicular single-cell suspensions - The testes albuginea were removed and the seminiferous tubules were settled in PBS for several minutes. Samples were dissociated by enzymatic digestion with collagenase type I (Sigma-Aldrich) (1 mg/mL) for 10 minutes at 37°C in PBS. Samples were then centrifuged

at 340 x g at 4°C for 5 minutes to pellet the seminiferous tubules. The pellets were treated with trypsin (0.25%) and DNase I (0.5 U; Invitrogen, Carlsbad, CA) for 10 minutes at 37°C. After neutralizing with DMEM (NACALAI TESQUE, Kyoto, Japan), 10% Fetal Bovine Serum (FBS) (Thermo Fisher Scientific) was added, and cell suspensions were passed through 40- μ m cell strainers (Fisher Scientific, Waltham, MA). Samples were centrifuged at 340 x g at 4°C. Testicular cells were collected (1×10^6 cells/mL) and stained with Hoechst 33342 (2.5 μ g/mL; Invitrogen) for 90 minutes at 37°C. Cells were then washed twice with 2% FBS-PBS and re-suspended in propidium iodide (PI; 1 μ g/mL) in 2% PBS.

Flow cytometric analysis and cell sorting - Single-cell suspensions of adult mouse testes were analyzed and sorted using a SORP FACSaria (BD Biosciences). PI-stained cells were discriminated as dead cells. Testicular cells were classified into three major populations (haploid, diploid, and tetraploid) based on the fluorescence intensity of Hoechst 33342. Subpopulations were determined and gated by their forward and side scatter properties (FSC/SSC) according to previous studies (45). Gating is shown in Supplemental Fig. S2.

Gene expression analysis - Total RNA was isolated from 10,000 germ cells (SG, SC, and RS) using an RNeasy Mini Kit

(Qiagen, Hilden, Germany). Total RNA from 10,000 cells was used as a template for complementary DNA synthesis. SuperScript III reverse transcriptase and random primers (Fisher Scientific) were used for reverse-transcription. Gene expression was quantified using the Fast SYBR Green Master Mix with Step One Plus real-time PCR system (Applied Biosystems). Relative mRNA levels were calculated using the comparative cycle threshold method and normalized to glyceraldehyde-3-phosphate dehydrogenase (*GAPDH*) mRNA. The maximum mRNA expression values for each group were represented as one. The primer sequences used for quantitative PCR and the resulting amplicon sizes were as follows: *GAPDH* (188 bp), forward 5'-tgacaatgaatacggctacagca-3', reverse 5'-ctcctgttattatgggggtctgg-3'; *LPAAT3* (174 bp), forward 5'-acctataccgccgtatcaactgc-3', reverse 5'-agtcgatctcgaagttgtggtg-3'; *Sperizin* (156 bp), forward 5'-aaccactcactggaccactagt-3', reverse 5'-tacggtcacctccaagtctctcaa-3'; *DMRT1* (191 bp), forward 5'-gaccccgctactacagca-3', reverse 5'-gtctgagcaggcacgtaagg-3'; *TNPI* (120 bp), forward 5'-accagccgcaagctaagac-3', reverse 5'-tttctacttttcaggacgctc-3'.

Sperm suspension - The cauda epididymis was removed from sacrificed male mice. The duct of the epididymis was cut, and sperm were collected by gently

squeezing the epididymis. Collected sperm were dropped into HTF medium (ARK Resource, Kumamoto). For insemination, sperm were allowed to capacitate in an incubator (37°C, 5% CO₂) for 60 minutes.

IVF - For inducing superovulation, 7.5 IU of equine chorionic gonadotropin (ASUKA Pharmaceutical, Tokyo, Japan) was intraperitoneally injected into C57BL/6N mature female mice, followed by intraperitoneal injection of 7.5 IU of human chorionic gonadotropin (ASUKA Pharmaceutical) after 48 hours. At 15 hours after injection, mice were euthanized. Oviducts were dissected and immersed in 200 µL of HTF medium in a fertilization dish. The ampulla of the oviducts was cut and 4-5 cumulus-oocyte complexes (COC) were obtained. These were added to the HTF medium and covered with mineral oil (Sigma-Aldrich). The fertilization dish was incubated at 37°C, 5% CO₂ in air for 30-60 minutes. 2 µL of sperm suspension was added (300 to 500 sperm/µL) into the center of COC containing HTF medium. The fertilization dish was incubated at 37°C, 5% CO₂ in air for 5 hours. Oocytes were then washed three times in fresh HTF medium in a washing dish. At 24 hours after insemination, fertilization rates were calculated as the total number of 2-cell stage embryos divided by the total number of inseminated oocytes multiplied by 100%.

Sperm-oocyte fusion assay - The COC obtained from superovulated female mice described previously were treated with hyaluronidase (0.5 mg/mL) (Sigma-Aldrich) to remove cumulus cells. Oocytes were then treated with Tyrode's Solution-Acidified (Irvine Scientific, Santa Ana, CA) and incubated in potassium simplex optimized medium (KSOM) (ARK Resource) to remove the zona pellucida. Zona pellucida-free oocytes were incubated with sperm. After incubation for 6 hours at 37°C, binucleated oocytes were identified as sperm-fused eggs. The fusion rate was calculated as the total number of binucleated oocytes divided by the total number of inseminated oocytes multiplied by 100%.

Measurement of male reproductive hormones - Levels of serum testosterone, LH, FSH were quantified by using enzyme immunoassay kits: Testosterone Parameter Assay kit KGE010 (R&D system, Minneapolis, MN), ELISA Kit for LH CEA441Mu (Cloud-Clone Corp., Houston, TX), and ELISA Kit for FSH CEA830Mu (Cloud-Clone Corp.).

Detection of apoptotic cells - For the detection of apoptotic cells in the testes, end-labeled by terminal deoxynucleotidyl transferase dUTP nick-end labeling (TUNEL) staining were used. Apoptotic germ cells on paraffin embedded testis tissue sections were detected using in situ Apoptosis Detection Kit

(TAKARA Biochemicals, Shiga, Japan).

Tissue homogenate preparation - Mouse testes were homogenized in TSC buffer (100 mM Tris-HCl, pH 7.4, 300 mM sucrose with a complete protease inhibitor cocktail) (Roche, Basel, Switzerland). After removing the tissue debris (800 x g, 10 minutes, 4°C) and crude mitochondrial fractions (9,000 x g, 10 minutes, 4°C), microsomal fractions were collected by the ultracentrifugation (100,000 x g, 60 minutes, 4°C). The pellets (microsomal fractions) were resuspended in ice-cold TSE buffer (20 mM Tris-HCl, pH 7.4, 1 mM EDTA, 300 mM sucrose). Protein concentrations were quantified using the Pierce BCA Protein Assay kit (Thermo Fisher Scientific).

Western blotting - Testicular microsomal or cytosolic proteins were resolved by 10% SDS-PAGE and transferred to a Hybond ECL nitrocellulose membrane (GE Healthcare, Little Chalfont, UK). The membrane was blocked with blocking buffer (5% skim milk in Tris-based buffer with 0.1% Tween 20) at 4°C for 16 hours. Anti-mouse LPAAT3 antibody (24), anti-mouse nectin-2 antibody (ab135246; Abcam, Cambridge, UK), anti-MMP2 antibody (ab37150; Abcam), and MT1-MMP (ab73879; Abcam) were used in this study. The membrane was incubated with primary antibody at room temperature for 60 minutes, washed three times for 5 minutes each with

wash buffer (Tris-based buffer with 0.1% Tween 20), and then incubated with an anti-rabbit IgG antibody conjugated to horseradish peroxidase (GE Healthcare) at room temperature for 60 minutes. The membrane was washed three times for 5 minutes each with wash buffer. The membrane was developed with ECL reagent (GE Healthcare), and immunoreactive proteins were visualized using the ImageQuant LAS 500 (GE Healthcare).

Immunocytochemical staining of sperm - Sperm suspensions were washed with PBS two times, fixed with 4% paraformaldehyde, and dried on glass slides. Fixed sperm were then permeabilized with 0.5% Triton X-100 on ice for 10 minutes, blocked in normal goat serum in PBS at room temperature for 30 minutes, and then incubated with an anti-Ubiquitin antibody (U5379; Sigma-Aldrich) at a dilution of 1:100. Sperm were then incubated with a secondary antibody, and the detection of signal was performed using the VECTASTAIN Elite ABC kit (Vector Laboratories, Cambridgeshire, UK). 3,3'-Diaminobenzidine (Vector) was used for colorimetric development.

LPAAT assay - The microsomal fractions (1 µg/tube) from the mouse testes were incubated with 50 µM of deuterium-labeled C16:0 LPA (d13-LPA, Avanti Polar Lipids, Alabaster AL) and 5 µM

each of 16:0-, 18:1-, 20:4-, and 22:6-CoA (Avanti Polar Lipids) in TSE buffer in a total volume of 100 µL for 10 minutes at 37°C. Enzymatic reactions were stopped by adding 300 µL of chloroform/methanol (1:3, v/v) containing the 1.38 µM of di-myristoyl PA (internal standard, Avanti Polar Lipids). Lipids were extracted using the method of Bligh and Dyer (46), and dried using a centrifugal evaporator (Sakuma Seisakusho Ltd., Tokyo, Japan). The dried lipids were reconstituted in 100 µL methanol. Products were separated on an AQUITY ultra performance liquid chromatography (UPLC) BEH Amide Column (1.7 µm, 2.1 mm × 30 mm) with a linear gradient of mobile phase B (acetonitrile) over the mobile phase A (20 mM NH₄HCO₃/water) using an AQUITY UPLC system (Waters, Milford, MA) at a flow rate of 800 µL/minute. The elution gradient was as follows (%A/%B): 0 minute (5/95)-5 minutes (80/20)-10 minutes (80/20)-15 minutes (5/95). The reaction products and the internal standard were analyzed using a TSQ Vantage triple stage quadrupole mass spectrometer (Thermo Fisher Scientific) by selected reaction monitoring (SRM). Each PA species was detected by the combination of [M-H]⁻ at Q1 and [fatty acid (FA)-H]⁻ at Q3. The amount of LPAAT assay product was calculated using the peak area value. Finally, LPAAT activities were represented as a normalized

area value by internal standard.

Lipid extraction for phospholipid composition analysis - Tissues or cells were homogenized in TSC buffer or buffer RLT from the RNeasy Mini Kit (QIAGEN). The tissue microsomal fraction or tissue/cell lysate (800 x g supernatant) was used for the lipid extraction. For PC, PE, and PS analyses, lipids were extracted using the method of Bligh and Dyer. Subsequently, lipids were dried using a centrifugal evaporator and reconstituted in methanol. For the PA analysis, acidic lipids were concentrated using a diethylaminoethyl-cellulose (DEAE cellulose) column, as described previously (47). Briefly, 50 μ L of tissue homogenate (800 x g supernatant) was mixed with 50 μ L of di-myristoyl PA (1 μ M in methanol), 750 μ L of *n*-butanol, 30 μ L of phosphate buffer (500 mM, pH 5.8), and 170 μ L of water. The samples were then vortexed for 5 minutes, sonicated for 3 minutes in a bath sonicator, and centrifuged at 1,000 x g for 5 minutes at 4°C. An upper layer (700 μ L) consisting of the first butanol extract was transferred to the new tube. For the second extraction, 700 μ L of ethyl acetate/hexane (1:1, v/v) was added to the remaining lower layer. After vortexing for 5 minutes and centrifuging at 1,000 x g for 5 minutes at 4°C, 700 μ L of the upper layer (second extract) was combined with an equal volume of the first butanol extract and methanol. The combined lipid extract totaling

1.5 mL was loaded onto the DEAE cellulose column. The column was washed with 2 mL of methanol, and then the acidic lipids containing PA were extracted with 1 mL of methanol/ammonia/formic acid (1000:33:22, v/v). The extract was dried using a centrifugal evaporator, and reconstituted in 120 μ L of methanol.

Analysis of phospholipids - Each phospholipid was measured using the LC-MS/MS using SRM (LC-SRM-MS). For PC, PE, and PS, LC-SRM-MS analyses were performed using a Nexera UHPLC system and a triple quadrupole mass spectrometers LCMS-8050 (Shimadzu Corporation, Kyoto, Japan) as we previously reported (48). The extracted lipids (5 μ L/injection) were separated on an Acquity UPLC BEH C8 column (1.7 μ m, 2.1 mm \times 100 mm, Waters) with a gradient of mobile phase A (5 mM NH_4HCO_3 /water), mobile phase B (acetonitrile), and mobile phase C (isopropanol) at a flow rate of 0.35 mL/minute. The gradient setting was as follows [time (%A)/(%B)/(%C)]: 0 minutes (75/20/5)-20 minutes (20/75/5)-40 minutes (20/5/75)-45 minutes (5/5/90)-50 minutes (5/5/90)-55 minutes (75/20/5). The column oven temperature was set to 47°C. SRM analysis of each phospholipid species was performed with the following transitions (Q1, Q3): ([M+H]⁺, 184) for PC, ([M+H]⁺, neutral loss of 141) for PE, and ([M-H]⁻, neutral loss

of 87) for PS. Additional SRM analyses with detection of fatty acid fragments at Q3 were performed using the testicular lipid extracts. SRM analyses were performed as follows (Q1, Q3): ([M+HCO₃]⁻, [FA-H]⁻) for PC and ([M-H]⁻, [FA-H]⁻) for PE. In this analysis, Q3 channels were set for the following fatty acids: 14:0, 14:1, 16:0, 16:1, 18:0 to 18:3, 20:0 to 20:4, 22:0 to 22:6, 24:0 to 24:6. The obtained retention time of each species was used for the peak identification of DHA-containing species in testes and germ cells (Fig. 2C-F). For PA, a LC-SRM-MS analysis was performed using an AQUITY UPLC system and TSQ Vantage triple stage quadrupole mass spectrometer (47). The extracted lipids (5 µL/injection) were separated on an Acclaim PepMap 100 C18 column (3 µm, 150 mm × 1.0 mm i.d., Thermo Fisher Scientific) with a linear gradient of mobile phase A (isopropanol/methanol/water, 5:1:4) and mobile phase B (isopropanol). Both mobile phases also contained 0.2% formic acid, 0.028% ammonia, and 5 µM phosphoric acid. The gradient transition was as follows (%A/%B): 0 minute (70/30)-2 minutes (50/50)-12 minutes (30/70)-12.5 minutes (5/95)-22.5 minutes (5/95)-23 minutes (95/5)-24 minutes (95/5)-26 minutes (70/30). SRM analysis of each PA species was performed with the following transitions (Q1, Q3): ([M+NH₄]⁺, neutral loss of 115). In the

case of PA, 5 µL of the mobile phase A was injected after every sample to determine the background of each experiment.

Quantification of phospholipids -

Deisotoping was performed manually using the retention time and signal intensity. For PA, the obtained background peak area values (see Analysis of phospholipids) were subtracted. If two or more peaks were seen in the single SRM channel, all peaks areas were combined, except for the cases when fatty acid combination at *sn*-1 and *sn*-2 position was determined and each peak area value was determined separately (Fig. 2C-F). To calculate the fatty acid composition of phospholipids, peak areas of individual species were normalized with the sum of all the detected species, and shown as a percentage of the total species. Phospholipid species in excess of 1% of the total species are shown as figures.

Annotation of phospholipids -

Each phospholipid species in the LC-SRM-MS analyses was denoted as X-AA:B. X indicates the name of each phospholipid, whereas AA and B are the sum of the number of carbons and double bonds in fatty acids at *sn*-1 and *sn*-2 position, respectively. In the case of PLs with ether bonds (alkyl species) and vinyl ether bonds (plasmalogen), the molecule is denoted as oX-AA:B and pX-AA:B, respectively. When different species displayed the same m/z

values, e.g., oPC-34:1 and pPC-34:0, they are denoted as oPC-34:1/ePC-34:0. If the fatty acid combinations at *sn*-1 and *sn*-2 were identified, phospholipid species was denoted as X-CC:D/EE:F. In this case, CC (and EE) is the number of carbons and D (and F) is the number of double bonds in fatty acids. These methods do not discriminate which *sn*-position harbors each fatty acid residue.

Scanning electron microscopy (SEM) - Sperm were fixed in 2.5% glutaraldehyde in PBS and post-fixed with 1% OsO₄. After fixation, sperm were dehydrated with serially increasing concentrations of ethanol (50% to 100%). They were incubated with a mixed solution of ethanol and isoamyl acetate, and then equilibrated with 100% isoamyl acetate before critical point drying with a JCPD-5 (JEOL, Tokyo, Japan). Samples were placed on specimen block. Conductive coating Pt was performed using a precision etching coating system Model682 (Gatan, CA). Imaging was carried out on a JSM-7001F electron microscope (JEOL).

Low vacuum SEM - Sperm collected from the cauda epididymis were fixed with 2% glutaraldehyde for 2 hours. Samples were washed three times with PBS, air dried, and coated for 30 minutes at room temperature with a Pt-blue solution, which was adjusted to pH 9 by adding a small volume of ammonia (TI-blue staining kit,

NISSHIN EM Co., Ltd., Tokyo, Japan). After washing with distilled water for 1-2 minutes, SEM images were obtained using a low SEM microscope Miniscope[®] TM3030 (Hitachi, Tokyo, Japan).

Transmitted electron microscopy (TEM) - Adult testes were fixed with 2.5% glutaraldehyde in 0.1 M phosphate buffer by perfusion through the left ventricle. Samples were then immersed in the same fixative overnight at 4°C, and then post-fixed with 2% osmium tetroxide. Samples were dehydrated through a graded ethanol series and embedded in Epon 812 (TAAB Laboratories Equipment, Berks, UK). Sections 1 µm in thickness were cut on an ultramicrotome (Ultracut E; Reichert-Jung, Vienna, Austria) and stained with 1% toluidine blue (Wajdeck GmbH & Co., Munster, Germany). Ultrathin sections were also cut and stained with uranyl acetate and lead citrate. The sections stained with toluidine blue were visualized on an Olympus BX50 light microscope and analyzed using images captured by a CCD camera RETIGA Exi FAST 1394 (Qimaging, Surrey, Canada). The ultrathin sections were observed using a JEOL JEM-1200 EX TEM (JEOL).

Liposome preparation - Liposomes were prepared by obtaining 500 nmol of palmitoyl-oleoyl PC (POPC, PC-16:0/18:1), palmitoyl-arachidonoyl PC (PAPC, PC-16:0/20:4), and

palmitoyl-docosahexaenoyl PC (PDPC, PC-16:0/22:6) in chloroform. All lipids were obtained from Avanti Polar Lipids. These samples were dried under nitrogen gas in a glass tube. The lipids were dried further using a centrifugal evaporator for 15 minutes at 37°C. The lipid films were reconstituted in 500 µL of Tris-NaCl-KCl buffer (TNK; 12.38 mM Tris-HCl pH 7.5, 68.44 mM NaCl, 1.34 mM KCl). After vortexing for 1 minute, the samples were subjected to five freeze-thaw cycles using liquid nitrogen and a 37°C water bath. Finally, the liposomes were passed through a polycarbonate filter (Ø 200 nm, Whatman) 21 times using a mini-extruder (Avanti Polar Lipids).

Liposome filter passage index - To monitor the pressure change caused by liposomes passing through the filter, a polycarbonate filter (30 nm pore size) was connected to the ÄKTA explorer chromatography system (ÄKTA explorer 10S, GE Healthcare Life Sciences). The assays were performed at 25°C. TNK buffer was

used as a mobile phase at a flow rate of 1 mL/minute. First, 100 µL of TNK buffer was injected to measure the reference pressure for 2 minutes. Next, a 100 µL solution containing the 200 nm-sized liposomes (1 mM, prepared as described above) was injected at a flow rate of 1 mL/minute for 2 minutes. The pressure change was obtained by subtracting the reference pressure. The decreased pressure value (Maximum pressure) – (pressure at 2 minutes after injection) was used to evaluate the ease of liposome passage. The liposome filter passage index was calculated as follows: (Decreased pressure value) / (Maximum pressure value) x 100.

Statistical analysis - Unpaired *t*-tests were used to compare two groups. Multiple comparisons were performed with Bonferroni's multiple comparison tests depending on the combinations of comparisons, after one-way or two-way ANOVA. All analyses were done with GraphPad Prism 5 for Mac OS X software (GraphPad Software, Inc., La Jolla, CA).

Acknowledgements: We are grateful for the constructive comments of S. Narumiya (Kyoto University), T. Ogawa (Yokohama City University Association of Medical Science), T. Harayama (University of Geneva), R. Morimoto (NCGM), and W.J. Valentine (NCGM). We thank M. Tamura-Nakano and all members of the Shimizu laboratory (NCGM and the University of Tokyo) for discussion, and technical supports. We thank T. Hattori and Y. Eto (JEOL) for technical support for SEM analyses.

Conflict of interests: None of the authors received support from any organization or has a financial relationship with any organization that might have an interest in the submitted work. There are no other relationships or activities that could have influence on this research.

Author contributions: Y.I-H. and D.H. design the project, performed the experiments, interpreted the data, and wrote the manuscript. J.S. generated the KO mouse. K.Ta., M.G., K.N., T.O., C.I., and K.To. performed the experiments, interpreted the data. H.N performed the unpublished essential experiments. K.Ta., H.S., C.I., K.To., T.Sa., and T.Sh. revised the manuscript. D.H. and T.Sh. supervised the project. All authors reviewed the results and approved the final version of the manuscript.

REFERENCES

1. Shimizu, T. (2009) Lipid mediators in health and disease: enzymes and receptors as therapeutic targets for the regulation of immunity and inflammation. *Annu. Rev. Pharmacol. Toxicol.* **49**, 123-150
2. Barelli, H., and Antonny, B. (2016) Lipid unsaturation and organelle dynamics. *Curr. Opin. Cell Biol.* **41**, 25-32
3. Hishikawa, D., Hashidate, T., Shimizu, T., and Shindou, H. (2014) Diversity and function of membrane glycerophospholipids generated by the remodeling pathway in mammalian cells. *J. Lipid Res.* **55**, 799-807
4. Pan, J., Tristram-Nagle, S., and Nagle, J. F. (2009) Effect of cholesterol on structural and mechanical properties of membranes depends on lipid chain saturation. *Phys. Rev. E Stat Nonlin Soft Matter Phys.* **80**, 021931
5. Roach, C., Feller, S. E., Ward, J. A., Shaikh, S. R., Zerouga, M., and Stillwell, W. (2004) Comparison of cis and trans fatty acid containing phosphatidylcholines on membrane properties. *Biochemistry* **43**, 6344-6351
6. Holthuis, J. C., and Menon, A. K. (2014) Lipid landscapes and pipelines in membrane homeostasis. *Nature* **510**, 48-57
7. Bernhard, K., and Schoenheimer R. (1940). The inertia of highly unsaturated fatty acids in the animal, investigated with deuterium. *J. Biol. Chem.* **133**, 707-712.
8. Spector, A. A., and Kim, H. Y. (2015) Discovery of essential fatty acids. *J. Lipid Res.* **56**, 11-21

9. Burr, G.O., Burr, M.M., and Miller, E.S. (1932). On the fatty acids essential in nutrition. III. *J. Biol. Chem.* **97**, 1-9.
10. Dyerberg, J., and Bang, H. O. (1978) Dietary fat and thrombosis. *Lancet* **1**, 152
11. Kidd, P. M. (2007) Omega-3 DHA and EPA for cognition, behavior, and mood: clinical findings and structural-functional synergies with cell membrane phospholipids. *Altern. Med. Rev.* **12**, 207-227
12. Serhan, C. N. (2014) Pro-resolving lipid mediators are leads for resolution physiology. *Nature* **510**, 92-101
13. Attaman, J. A., Toth, T. L., Furtado, J., Campos, H., Hauser, R., and Chavarro, J. E. (2012) Dietary fat and semen quality among men attending a fertility clinic. *Hum. Reprod.* **27**, 1466-1474
14. Teerds, K. J., de Rooij, D. G., and Keijzer, J. (2011) Functional relationship between obesity and male reproduction: from humans to animal models. *Hum. Reprod. Update.* **17**, 667-683
15. Esmaeili, V., Shahverdi, A. H., Moghadasian, M. H., and Alizadeh, A. R. (2015) Dietary fatty acids affect semen quality: a review. *Andrology.* **3**, 450-461
16. Gulaya, N. M., Margitich, V. M., Govseeva, N. M., Klimashevsky, V. M., Gorpynchenko, II, and Boyko, M. I. (2001) Phospholipid composition of human sperm and seminal plasma in relation to sperm fertility. *Arch. Androl.* **46**, 169-175
17. Stoffel, W., Holz, B., Jenke, B., Binczek, E., Gunter, R. H., Kiss, C., Karakesisoglou, I., Thevis, M., Weber, A. A., Arnhold, S., and Addicks, K. (2008) Delta6-desaturase (FADS2) deficiency unveils the role of omega3- and omega6-polyunsaturated fatty acids. *EMBO J.* **27**, 2281-2292
18. Stroud, C. K., Nara, T. Y., Roqueta-Rivera, M., Radlowski, E. C., Lawrence, P., Zhang, Y., Cho, B. H., Segre, M., Hess, R. A., Brenna, J. T., Haschek, W. M., and Nakamura, M. T. (2009) Disruption of FADS2 gene in mice impairs male reproduction and causes dermal and intestinal ulceration. *J. Lipid Res.* **50**, 1870-1880
19. Lenzi, A., Picardo, M., Gandini, L., and Dondero, F. (1996) Lipids of the sperm plasma membrane: from polyunsaturated fatty acids considered as markers of sperm function to possible scavenger therapy. *Hum. Reprod. Update.* **2**, 246-256
20. Nguyen, L. N., Ma, D., Shui, G., Wong, P., Cazenave-Gassiot, A., Zhang, X., Wenk, M. R., Goh, E. L., and Silver, D. L. (2014) Mfsd2a is a transporter for the essential omega-3 fatty acid docosahexaenoic acid. *Nature* **509**, 503-506

21. Rice, D. S., Calandria, J. M., Gordon, W. C., Jun, B., Zhou, Y., Gelfman, C. M., Li, S., Jin, M., Knott, E. J., Chang, B., Abuin, A., Issa, T., Potter, D., Platt, K. A., and Bazan, N. G. (2015) Adiponectin receptor 1 conserves docosahexaenoic acid and promotes photoreceptor cell survival. *Nat. Commun.* **6**, 6228
22. Pan, Y., Scanlon, M. J., Owada, Y., Yamamoto, Y., Porter, C. J., and Nicolazzo, J. A. (2015) Fatty Acid-Binding Protein 5 Facilitates the Blood-Brain Barrier Transport of Docosahexaenoic Acid. *Mol. Pharm.* **12**, 4375-4385
23. Yuki, K., Shindou, H., Hishikawa, D., and Shimizu, T. (2009) Characterization of mouse lysophosphatidic acid acyltransferase 3: an enzyme with dual functions in the testis. *J. Lipid Res.* **50**, 860-869
24. Koeberle, A., Shindou, H., Harayama, T., Yuki, K., and Shimizu, T. (2012) Polyunsaturated fatty acids are incorporated into maturing male mouse germ cells by lysophosphatidic acid acyltransferase 3. *FASEB J.* **26**, 169-180
25. Wang, S., Wang, X., Ma, L., Lin, X., Zhang, D., Li, Z., Wu, Y., Zheng, C., Feng, X., Liao, S., Feng, Y., Chen, J., Hu, X., Wang, M., and Han, C. (2016) Retinoic Acid Is Sufficient for the In Vitro Induction of Mouse Spermatocytes. *Stem Cell Reports* **7**, 80-94
26. Koeberle, A., Shindou, H., Harayama, T., and Shimizu, T. (2010) Role of lysophosphatidic acid acyltransferase 3 for the supply of highly polyunsaturated fatty acids in TM4 Sertoli cells. *FASEB J.* **24**, 4929-4938
27. Cheng, C. Y., and Mruk, D. D. (2010) A local autocrine axis in the testes that regulates spermatogenesis. *Nat. Rev. Endocrinol.* **6**, 380-395
28. Yan, H. H., Mruk, D. D., Lee, W. M., and Cheng, C. Y. (2007) Ectoplasmic specialization: a friend or a foe of spermatogenesis? *Bioessays*. **29**, 36-48
29. O'Donnell, L. (2014) Mechanisms of spermiogenesis and spermiation and how they are disturbed. *Spermatogenesis* **4**, e979623
30. O'Donnell, L., Nicholls, P. K., O'Bryan, M. K., McLachlan, R. I., and Stanton, P. G. (2011) Spermiation: The process of sperm release. *Spermatogenesis* **1**, 14-35
31. Pinot, M., Vanni, S., Pagnotta, S., Lacas-Gervais, S., Payet, L. A., Ferreira, T., Gautier, R., Goud, B., Antonny, B., and Barelli, H. (2014) Lipid cell biology. Polyunsaturated phospholipids facilitate membrane deformation and fission by endocytic proteins. *Science* **345**, 693-697
32. Harayama, T., Eto, M., Shindou, H., Kita, Y., Otsubo, E., Hishikawa, D., Ishii, S.,

- Sakimura, K., Mishina, M., and Shimizu, T. (2014) Lysophospholipid acyltransferases mediate phosphatidylcholine diversification to achieve the physical properties required in vivo. *Cell Metab.* **20**, 295-305
33. Sanocka, D., and Kurpisz, M. (2004) Reactive oxygen species and sperm cells. *Reprod. Biol. Endocrinol.* **2**, 12
34. Roqueta-Rivera, M., Stroud, C. K., Haschek, W. M., Akare, S. J., Segre, M., Brush, R. S., Agbaga, M. P., Anderson, R. E., Hess, R. A., and Nakamura, M. T. (2010) Docosahexaenoic acid supplementation fully restores fertility and spermatogenesis in male delta-6 desaturase-null mice. *J. Lipid Res.* **51**, 360-367
35. Roqueta-Rivera, M., Abbott, T. L., Sivaguru, M., Hess, R. A., and Nakamura, M. T. (2011) Deficiency in the omega-3 fatty acid pathway results in failure of acrosome biogenesis in mice. *Biol. Reprod.* **85**, 721-732
36. Eldho, N. V., Feller, S. E., Tristram-Nagle, S., Polozov, I. V., and Gawrisch, K. (2003) Polyunsaturated docosahexaenoic vs docosapentaenoic acid-differences in lipid matrix properties from the loss of one double bond. *J. Am. Chem. Soc.* **125**, 6409-6421
37. Chavarro, J. E., Minguez-Alarcon, L., Mendiola, J., Cutillas-Tolin, A., Lopez-Espin, J. J., and Torres-Cantero, A. M. (2014) Trans fatty acid intake is inversely related to total sperm count in young healthy men. *Hum. Reprod.* **29**, 429-440
38. Jensen, T. K., Heitmann, B. L., Blomberg Jensen, M., Halldorsson, T. I., Andersson, A. M., Skakkebaek, N. E., Joensen, U. N., Lauritsen, M. P., Christiansen, P., Dalgard, C., Lassen, T. H., and Jorgensen, N. (2013) High dietary intake of saturated fat is associated with reduced semen quality among 701 young Danish men from the general population. *Am. J. Clin. Nutr.* **97**, 411-418
39. Gebauer, S. K., Psota, T. L., Harris, W. S., and Kris-Etherton, P. M. (2006) n-3 fatty acid dietary recommendations and food sources to achieve essentiality and cardiovascular benefits. *Am. J. Clin. Nutr.* **83**, 1526S-1535S
40. Palmer, N. O., Bakos, H. W., Fullston, T., and Lane, M. (2012) Impact of obesity on male fertility, sperm function and molecular composition. *Spermatogenesis.* **2**, 253-263
41. Brasky, T. M., Darke, A. K., Song, X., Tangen, C. M., Goodman, P. J., Thompson, I. M., Meyskens, F. L., Jr., Goodman, G. E., Minasian, L. M., Parnes, H. L., Klein, E. A., and Kristal, A. R. (2013) Plasma phospholipid fatty acids and prostate cancer risk in the SELECT trial. *J. Natl. Cancer Inst.* **105**, 1132-1141
42. Giusto, N. M., Salvador, G. A., Castagnet, P. I., Pasquare, S. J., and Ilincheta de

- Boschero, M. G. (2002) Age-associated changes in central nervous system glycerolipid composition and metabolism. *Neurochem. Res.* **27**, 1513-1523
43. Micallef, M., Munro, I., Phang, M., and Garg, M. (2009) Plasma n-3 Polyunsaturated Fatty Acids are negatively associated with obesity. *Br. J. Nutr.* **102**, 1370-1374
44. Uauy, R., and Dangour, A. D. (2006) Nutrition in brain development and aging: role of essential fatty acids. *Nutr. Rev.* **64**, S24-33; discussion S72-91
45. Mays-Hoopers, L. L., Bolen, J., Riggs, A. D., and Singer-Sam, J. (1995) Preparation of spermatogonia, spermatocytes, and round spermatids for analysis of gene expression using fluorescence-activated cell sorting. *Biol. Reprod.* **53**, 1003-1011
46. Bligh, E. G., and Dyer, W. J. (1959) A rapid method of total lipid extraction and purification. *Can. J. Biochem. Physiol.* **37**, 911-917
47. Ogiso, H., Taniguchi, M., Araya, S., Aoki, S., Wardhani, L. O., Yamashita, Y., Ueda, Y., and Okazaki, T. (2014) Comparative Analysis of Biological Sphingolipids with Glycerophospholipids and Diacylglycerol by LC-MS/MS. *Metabolites* **4**, 98-114
48. Hashidate-Yoshida, T., Harayama, T., Hishikawa, D., Morimoto, R., Hamano, F., Tokuoka, S. M., Eto, M., Tamura-Nakano, M., Yanobu-Takanashi, R., Mukumoto, Y., Kiyonari, H., Okamura, T., Kita, Y., Shindou, H., and Shimizu, T. (2015) Fatty acid remodeling by LPCAT3 enriches arachidonate in phospholipid membranes and regulates triglyceride transport. *Elife* **4**, e06328

FOOTNOTES

This work was supported by MEXT/JSPS KAKENHI (24229003, T.Sh. 26115005, K.Ta., 15K10638, C.I., 26253006, 26460380, H.S., and 15H05899, T.Sa.), grants from NCGM (26-001, K.Ta. and 26A105, T.O.), JST-CREST (H.S. and T.Sa.), AMED-CREST (H.S., T.Sa., and K.Ta.), and Takeda Science Foundation (T.Sh.). Department of Lipid Signaling, National Center for Global Health and Medicine is financially supported by ONO PHARMACEUTICAL CO., LTD. Department of Lipidomics, Graduate School of Medicine, The University of Tokyo, is financially supported by SHIMADZU CORP.

The abbreviations used are: LPAAT, lysophosphatidic acid acyltransferase; DHA, docosahexaenoic acid; PUFA, polyunsaturated fatty acid; SG, spermatogonia; SC, spermatocyte; RS, round spermatid; ES, elongated spermatid; PA, phosphatidic acid; PC, phosphatidylcholine; PE, phosphatidylethanolamine; PS, phosphatidylserine; HZ, heterozygote; DPA, docosapentaenoic acid; LH, luteinizing hormone; FSH, follicle-stimulating hormone; IVF, *in vitro* fertilization; FADS, fatty acid desaturase; aES, apical ectoplasmic specializatoin; SEM, scanning electron microscopy; TBC, tubulobulbar complex; MMP, matrix metalloproteinases; MT1-MMP, membrane type-1-MMP; TEM, transmitted electron microscopy; HTF, human tubal fluid; COC, cumulus-oocyte complex; FBS, fetal bovine serum TSC, Tris sucrose with a complete protease inhibitor cocktail; TSE, Tris sucrose EDTA; SRM, selected reaction monitoring.

FIGURE LEGENDS

FIGURE 1. LPAAT3 expression in testes. (A) Representative immunohistochemical images of mouse testes. LPAAT3 (red), acrosome (green), and nucleus (blue). Acrosome and nuclear staining was used to stage seminiferous tubules. (B) Relative mRNA expression of *LPAAT3* in differentiating germ cells from HZ and KO mice. *LPAAT3* mRNA expression was normalized to *GAPDH*. SG, spermatogonia; SC, spermatocyte; RS, round spermatid (See also Supplemental Fig. S2A-C). Error bars are SD (n=3).

FIGURE 2. LPAAT3 is required for the production of DHA-containing phospholipids in testes. (A) LPAAT activity in the microsomal fraction of testes in WT and KO mice. Mixed acyl-CoA substrates were used in a single assay. * $P < 0.05$, *** $P < 0.001$; Unpaired *t*-test. (B)

PC composition in the testes. Arrows indicate the putative DHA-containing species. (C, D) Fatty acid composition of PC-38:6 (C) and PC-40:6 (D), shown in Fig. 2B. (E, F) The percentage of DHA-containing PCs (E) and PEs (F) in germ cells from HZ and KO mice. *ES*, elongated spermatid (See also Supplemental Fig. S2A-C). (C-F) $*P < 0.05$, $**P < 0.01$, $***P < 0.001$, $****P < 0.0001$; two-way ANOVA, Bonferroni's multiple comparison test. (A-F) Error bars are SD (n=3).

FIGURE 3. Loss of LPAAT3 leads to male infertility. (A, B) The testis weight (A) and the number of epididymal sperm (B) of WT, HZ, and KO mice. (C-E) The levels of testosterone (C), LH (D), and FSH (E) in serum. Error bars are SD (C; n=5, D and E; n=3). (F) Representative images of TUNEL staining of LPAAT3 WT and KO testis. Arrows indicate the TUNEL-positive apoptotic germ cells. (G) The numbers of apoptotic cells per 50 seminiferous tubules. The sum of TUNEL-positive germ cells in 50 different tubules from one section was indicated. Error bars are SD (n=3). (H, I) The ratio of successful IVF (H) and sperm-egg fusion (I). Error bars are SD (n=3). The average values and SD are shown. (A, B, H, I) $**P < 0.01$, $***P < 0.001$, $****P < 0.0001$, NS indicates not significant; One-way ANOVA, Bonferroni's multiple comparison test. (C-E, G) NS indicates not significant; Unpaired *t*-test.

FIGURE 4. LPAAT3 KO sperm display morphological abnormalities. (A) Morphological analysis using low vacuum SEM. (B) The ratio of abnormal sperm from WT HZ, and KO epididymis. (C) Ploidy of testicular germ cells from HZ and KO mice. (D) Fraction frequency of isolated germ cells. (E) mRNA expression of differentiation markers in germ cells. DMRT1, Doublesex-related transcription factor 1; TNP1, Transition protein 1. Error bars are SD (n=3). (B) $****P < 0.0001$, NS indicates not significant; One-way ANOVA, Bonferroni's multiple comparison test. (C-E) There are no significant differences between HZ and KO mice; One-way (C, D) or two-way (E) ANOVA, Bonferroni's multiple comparison test.

FIGURE 5. Delayed sperm release in LPAAT3 KO mice. (A) Representative SEM images of sperm heads. (B) Expression of nectin-2 in testes and epididymal sperm. (C) Toluidine blue staining of stage VIII-IX seminiferous tubules of HZ and KO testis. Arrows and arrowheads indicate step 16 and step 9 spermatids, respectively. Normally, step 9 and step 16 spermatids do not coexist in the same stage of seminiferous tubules (See also Supplemental Fig. S1). Delayed mature (step 16) sperm release in LPAAT3 KO testes prevent us to discriminate between stage

VIII and stage IX.

FIGURE 6. DHA-containing phospholipid enriched flexible membrane is required for sperm maturation. (A) Schematic image of aES and TBC. Both protease-mediated degradation at aES and endocytosis-mediated lysosomal degradation through TBC are necessary to remove sperm-Sertoli cell junctions. (B, C) MMP2 (B) and MT1-MMP (C) expression in testicular cytosolic and microsomal fraction were analyzed by Western blotting. Arrowheads indicate the band of Pro-MMP2 (72 kDa), proteolytically activated MMP2 (66 kDa), and MT1-MMP (66 kDa). (D) TEM images of step 15 and 16 spermatids in HZ and KO testes. Magenta arrows indicate excess cytoplasm in LPAAT3 KO sperm. Black arrows indicate acrosome (Ac) and aES. (E) Immunocytochemical staining of sperm cytoplasm using anti-ubiquitin antibody. Arrows indicate the sperm heads. Boxed areas were magnified. (F, G) Results of liposome filtration assay. Pressure change (F) and filter passage index (G) for each liposome. POPC, palmitoyl-oleoyl PC (PC-16:0/18:1); PAPC, palmitoyl-arachidonoyl PC (PC-16:0/20:4); PDPC, palmitoyl-docosahexaenoyl PC (PC-16:0/22:6). Error bars are SD (three technical replicates). Similar results were obtained in five independent experiments. * $P < 0.05$, ** $P < 0.01$, NS indicates not significant; One-way ANOVA, Bonferroni's multiple comparison test.

Figure 1

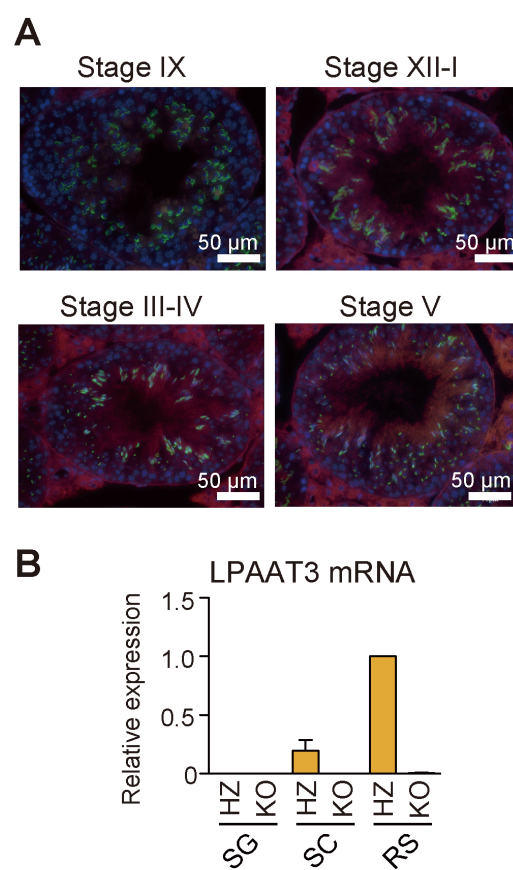


Figure 2

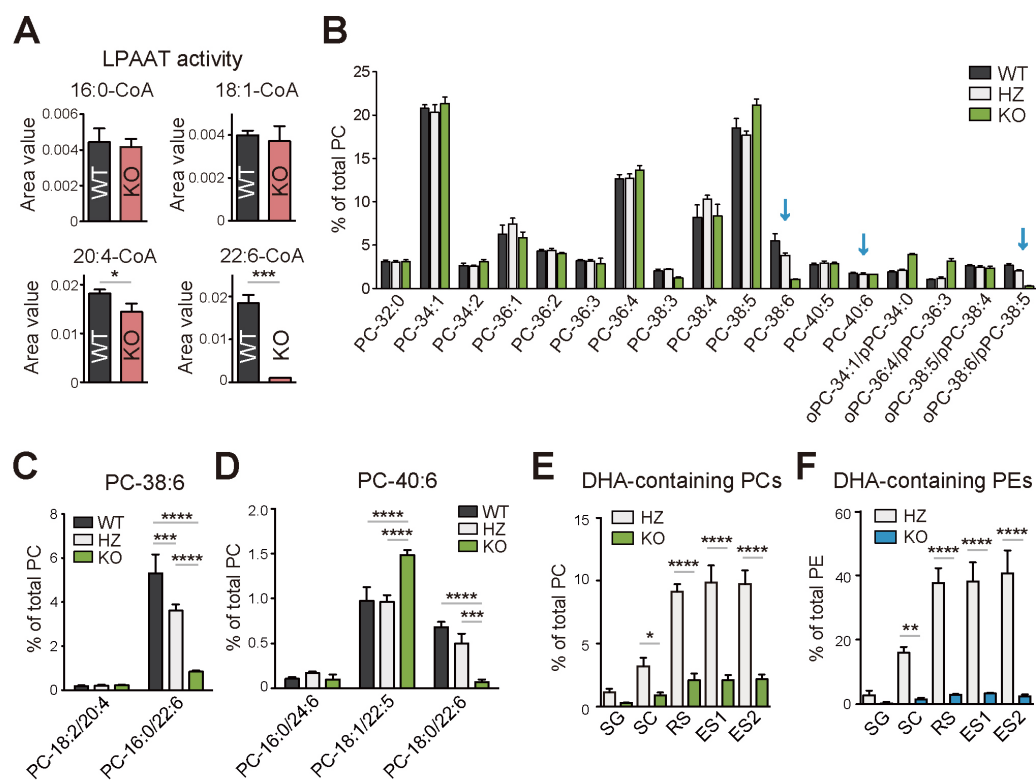


Figure 3

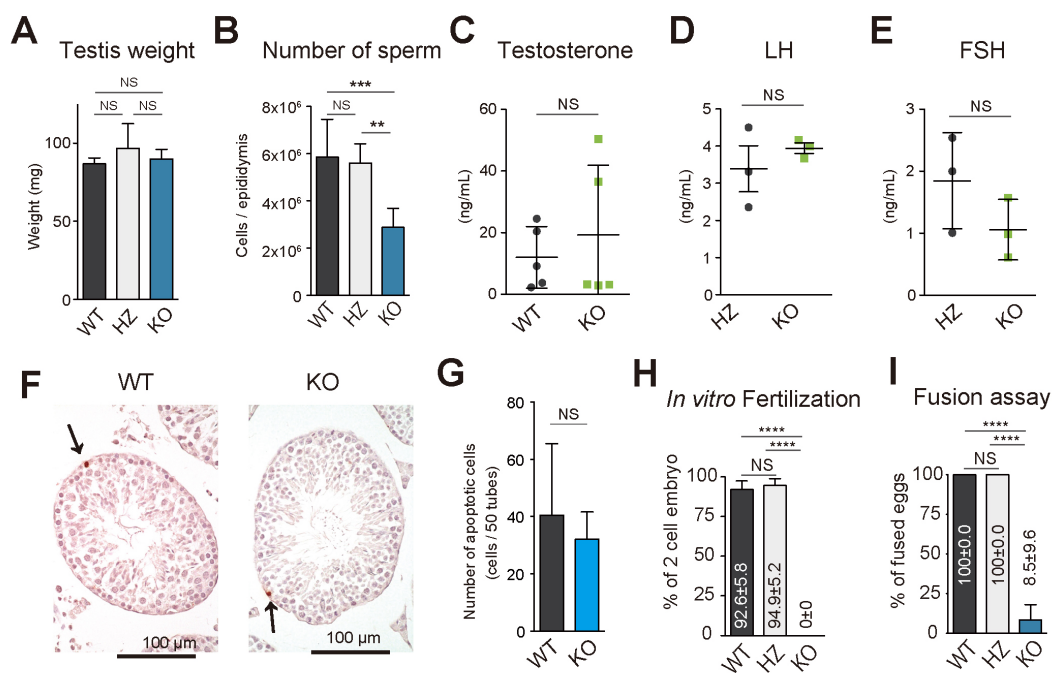


Figure 4

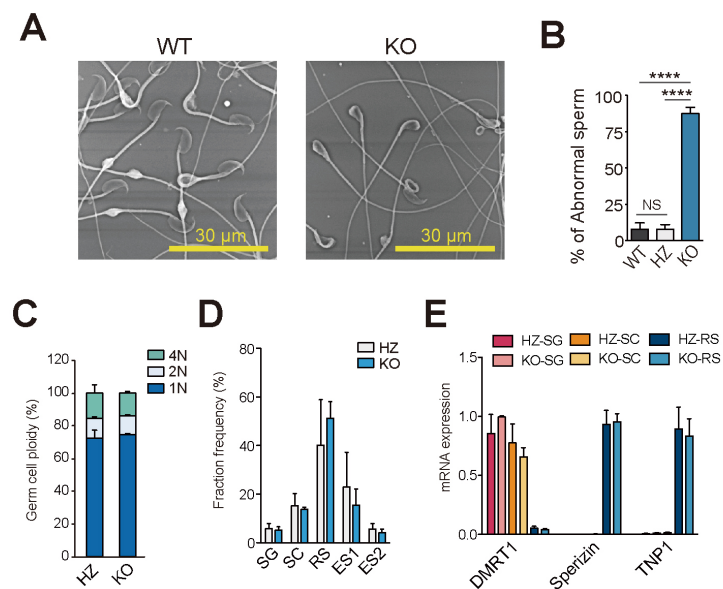


Figure 5

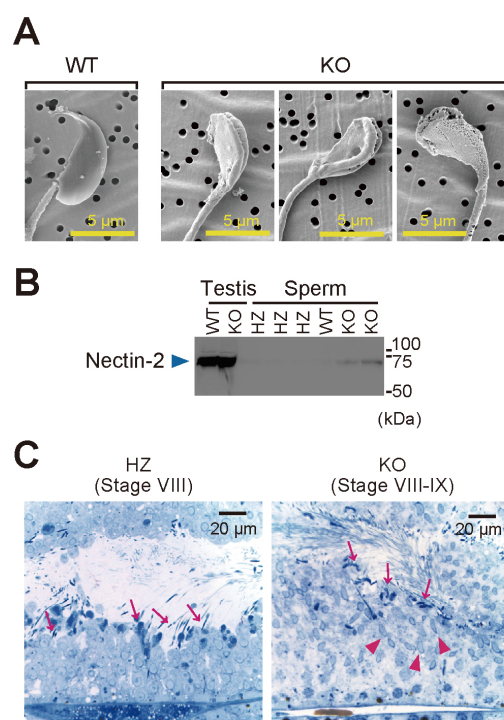
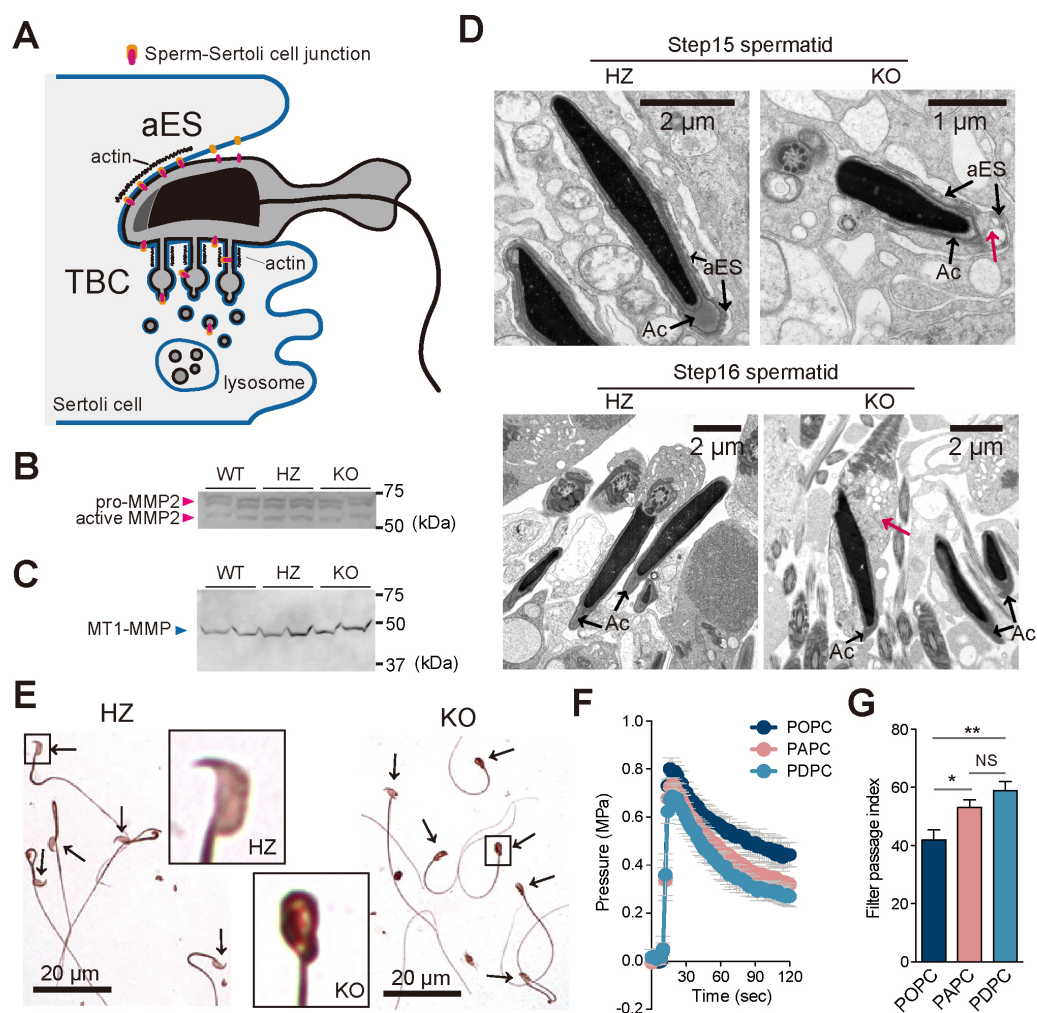


Figure 6



**Lysophosphatidic acid acyltransferase 3 tunes the membrane status of germ cells
by incorporating docosahexaenoic acid during spermatogenesis.**

Yoshiko Iizuka-Hishikawa, Daisuke Hishikawa, Junko Sasaki, Keiyo Takubo, Motohito Goto, Katsuyuki Nagata, Hiroki Nakanishi, Hideo Shindou, Tadashi Okamura, Chizuru Ito, Kiyotaka Toshimori, Takehiko Sasaki and Takao Shimizu

J. Biol. Chem. published online June 3, 2017

Access the most updated version of this article at doi: [10.1074/jbc.M117.791277](https://doi.org/10.1074/jbc.M117.791277)

Alerts:

- [When this article is cited](#)
- [When a correction for this article is posted](#)

[Click here](#) to choose from all of JBC's e-mail alerts

Supplemental material:

<http://www.jbc.org/content/suppl/2017/06/03/M117.791277.DC1>

This article cites 0 references, 0 of which can be accessed free at

<http://www.jbc.org/content/early/2017/06/03/jbc.M117.791277.full.html#ref-list-1>